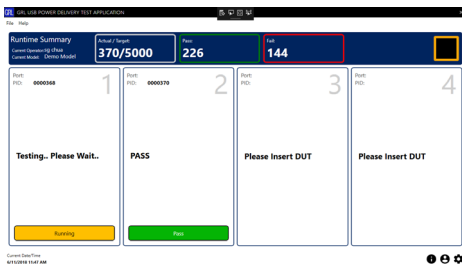


GRL-USB-PD-M1

GRL Intelligent USB Power ATE (GRL-USB-PD-M1)

All-in-One Intelligent USB Power Performance ATE for High Volume Production Testing



- Used by major OEM brands to evaluate factory units
- Used by factories to support 100% in-line testing
- User by engineers to develop and run custom USB Power Delivery tests

Product Overview

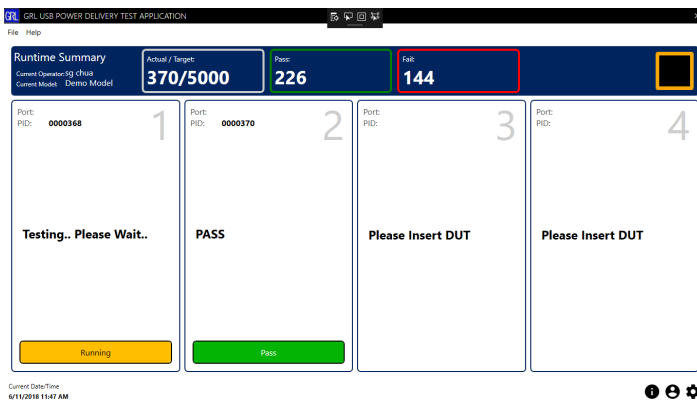
The GRL-USB-PD-M1 can be used to test a wide range of products with USB Type-C™ and Type-A ports, including mobile phones, PC's, docks, monitors, USB based power banks, wall and car chargers, and car infotainment systems supporting different charging technologies including USB PD 2.0, USB PD 3.0 with PPS, Qualcomm® QC 2.0, QC 3.0, QC4, QC4+.

The GRL-USB-PD-M1 tester integrates all the required tests for USB Type-C PD into a single 8-Port ATE. Each port can be configured independently as a PD Provider or Consumer for PD system testing for up to 120 watts. The GRL-USB-PD-M1 enables factory operators to quickly run full functional and power testing without even pushing a button.

Factories can run built-in functional tests that check for protocol negotiation, power loading, voltage impact of no-load/full-load situations, voltage overshoot/undershoot, ripple, over-current, short circuit, and Level VI power efficiency testing. Simple green and red indicators show pass/fail results to operators while full test logs are automatically saved for later review by factory test engineers.

Features

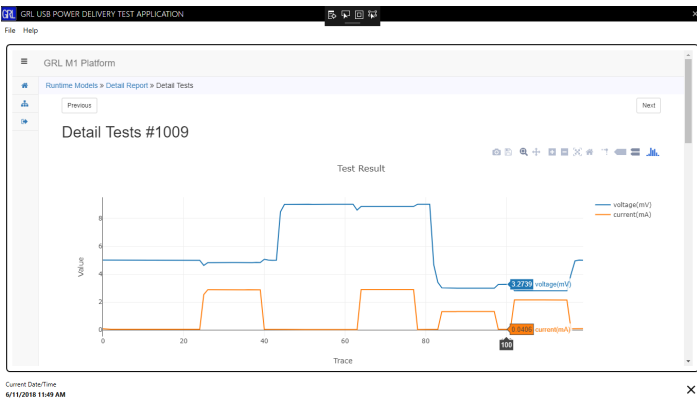
- Integrates 5 Instruments into a single compact ATE
- ATE can be easily wheeled anywhere on the production line
- Complete testing of 8 USB based devices in parallel within 30 seconds in a single setup
- Easy to use software allows you to select test coverage and test reports
- Detail protocol and power test logs and traces captured for every test run
- Test data can be stored locally on PC or accessed through the cloud
- Perfect for testing mobile phones, PC's, docks, monitors, USB based power banks, wall and car chargers, and car infotainment systems
- Functionally exercises power capabilities over multiple voltage rails
- Eight fully independent ports - source/sink up to 240W
- Support of multiple charging technologies like USB Power Delivery, USB Battery Charging 1.2, Qualcomm Quick Charge, etc.
- Tests for proper USB Power Delivery negotiation, power loading, voltage impact of no-load/full-load situations, voltage overshoot/undershoot, ripple, over-current, short circuit, and Level VI power efficiency testing



Software Main Screen

Test No	Serial No	Duration(sec)	Timestamp	Status	Action
1003	0000361	6	2018-06-08 09:51:22	Pass	View Tests Detail
1002	0000360	6	2018-06-08 09:50:52	Pass	View Tests Detail
1001	0000359	5	2018-06-08 09:50:00	Pass	View Tests Detail
1000	0000358	16	2018-06-07 14:51:52	Fail	View Tests Detail
999	0000357	16	2018-06-07 14:47:30	Fail	View Tests Detail
998	0000356	16	2018-06-07 14:46:05	Fail	View Tests Detail
997	0000355	13	2018-06-07 14:43:39	Pass	View Tests Detail
996	0000354	13	2018-06-07 14:43:20	Pass	View Tests Detail
995	0000353	13	2018-06-04 22:46:53	Pass	View Tests Detail
994	0000352	13	2018-06-04 22:46:29	Pass	View Tests Detail

Test Overall Report



Test Detail

Test Configuration



Silicon Valley, USA

Hsinchu & Taipei, Taiwan

Shanghai, China

Dongguan, China

Yokohama, Japan

Bangalore, India

Böblingen, Germany

Singapore

Penang, Malaysia

Ordering information

For a formal quote and pricing information, contact info@graniteriverlabs.com or your Tektronix sale representative.

Model Number	Description
GRL-USB-PD-M1	GRL Intelligent USB Power ATE

About Granite River Labs

Granite River Labs (GRL) provides end-to-end Engineering Services and Test Solutions to help hardware engineers adopt connectivity technologies. A trusted partner of up-and-coming hardware developers to some of the largest companies in the world, GRL combines recognized industry experts, high performance test equipment, and automated test solutions. For additional information or questions regarding Granite River Labs, including quotes, product demonstrations, software and technical assistance, please contact us at: info@graniteriverlabs.com

© Granite River Labs Asia Pacific Pte. Ltd. All rights reserved. All trademarks used in this document are the property of their respective owners. Product specifications and descriptions in this document subject to change without notice. Contact your sales consultant for the latest information.

USB Type-C™ and USB-C™ are trademarks of USB Implementers Forum. Thunderbolt and the Thunderbolt logo are trademarks of Intel Corporation or its subsidiaries in the U.S. and or other countries.

GRL-USB-PD-F1, published June 2018



World Wide Headquarters

Granite River Labs

3500 Thomas Road, Suite A
 Santa Clara, CA 95054 USA
 +1 (408) 627-7608
info@graniteriverlabs.com
www.graniteriverlabs.com