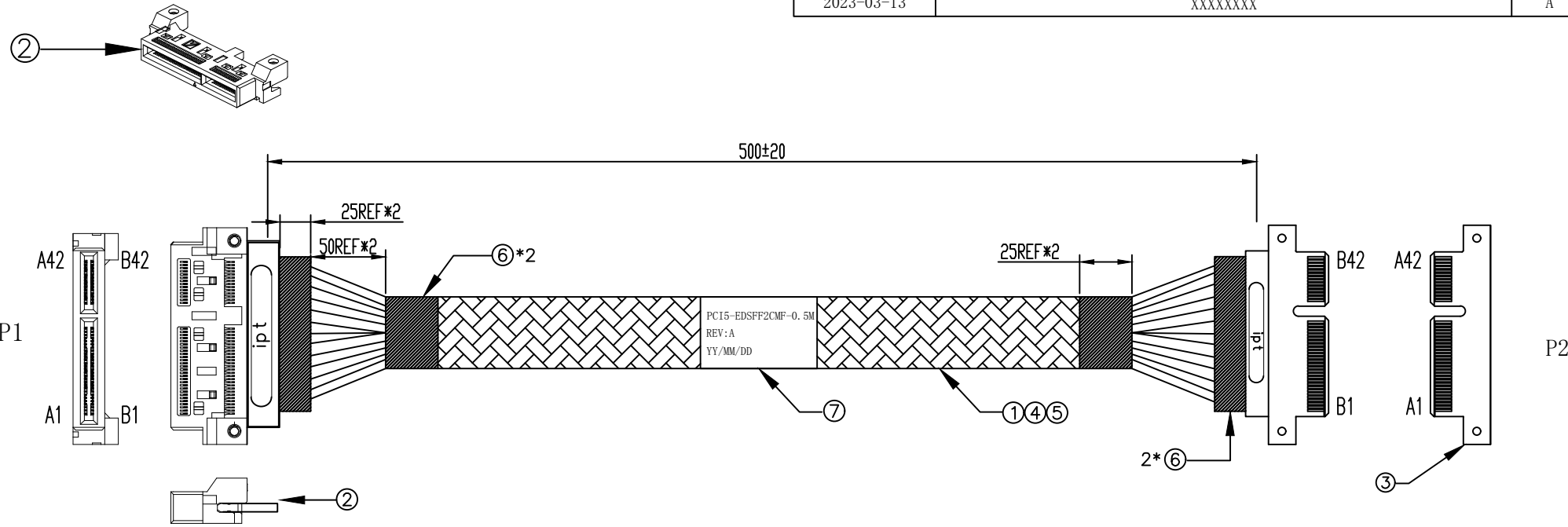
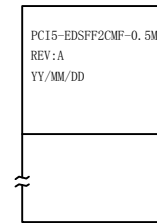


5	DATE	DESCRIPTION OF CHANGE	REV
	2023-03-13	XXXXXXXX	A



**ELECTRICAL CHARACTER:**

1. 100% OPEN & SHORT & MISS-WIRING & INTERMITTENCE TEST  
100%开路、短路、漏线、间歇试验
2. CONDUCTIVE RESISTANCE: 3Ω MAX  
导电电阻: 3Ω Max
3. INSULATION RESISTANCE: 10 MΩ  
绝缘电阻: 10 MΩ
4. HI-POT TEST: 300VDC FOR 10ms.  
高压槽测试: 300VDC 10ms.
5. THIS PRODUCT MEETS RoHS2.0 & PCIE Gen 5.0  
本产品符合RoHS2.0 & pcie Gen 5.0



LABLE

⑦	LABLE		LABLE:40*40MM	-	M
⑥	ACETATE cloth		ACETOUS Tape:25mm WIDE,BLK	-	M
⑤	Nylon net		TPT Nylon net (96 ingots 0.25*12 mesh single strand) OD: 9-20mm Black <ROHS, FR, HF>	-	M
④	WIRE		UL1061 30AWG Any colors	-	M
③	Connector		SFF-1002 2C PCB	1	SET
②	Connector		SFF-1002 2C connector	1	SET
①	CABLE		SAS 30AWG银色85μ PCIE GEN5 (IPT-P05S53001)	-	M
NO.	NAME	IPT NO.	DESCRIPTION	Q'TY	UNIT

TITLE	SFF-TA-1002 2C male to SFF-TA-1002 2C mother cable					SHEET	1/2
CUSTOMER		CUSTOMER P/N	PCI5-EDSFF2CMF-0.5M	DRAWING	chenlingmin		
DWG NO.	WIPT20230313006	UNIT	SCALE	REV	VIEW	CHECKED	liupeng
SC P/N		mm	NONE	A		APPROVAL	

# WIRING TABLE

P1  
(SFF-1002 2C+ F)

P2  
(SFF-1002 2C+ M)

PERST2#	0A1		0A1	PERST2#
PERST3#	0A2		0A2	PERST3#
WAKE#	0A3		0A3	WAKE#
RBT_ARB_IN	0A4		0A4	RBT_ARB_IN
RBT_ARB_OUT	0A5		0A5	RBT_ARB_OUT
SLOT_ID1	0A6		0A6	SLOT_ID1
RBT_TX_EN	0A7		0A7	RBT_TX_EN
RBT_TXD1	0A8		0A8	RBT_TXD1
RBT_TXD0	0A9		0A9	RBT_TXD0
GND	0A10		0A10	GND
REFCLKn3	0A11		0A11	REFCLKn3
REFCLKp3	0A12		0A12	REFCLKp3
GND	0A13		0A13	GND
RBT_CLK_IN	0A14		0A14	RBT_CLK_IN
KEY			KEY	
GND	A1		A1	GND
GND	A2		A2	GND
GND	A3		A3	GND
GND	A4		A4	GND
GND	A5		A5	GND
GND	A6		A6	GND
MGMT_CLK	A7		A7	MGMT_CLK
MGMT_DAT	A8		A8	MGMT_DAT
MGMT_RST#	A9		A9	MGMT_RST#
LED#/ACTIVITY	A10		A10	LED#/ACTIVITY
PERST1#/CLKREQ	A11		A11	PERST1#/CLKREQ
PRSNT_1#	A12		A12	PRSNT_1#
GND	A13		A13	GND
REFCLKn1	A14		A14	REFCLKn1
REFCLKp1	A15		A15	REFCLKp1
GND	A16		A16	GND
RX0n	A17		A17	RX0n
RX0p	A18		A18	RX0p
GND	A19		A19	GND
RX1n	A20		A20	RX1n
RX1p	A21		A21	RX1p
GND	A22		A22	GND
RX2n	A23		A23	RX2n
RX2p	A24		A24	RX2p
GND	A25		A25	GND
RX3n	A26		A26	RX3n
RX3p	A27		A27	RX3p
GND	A28		A28	GND
KEY			KEY	
GND	A29		A29	GND
RX4n	A30		A30	RX4n
RX4p	A31		A31	RX4p
GND	A32		A32	GND
RX5n	A33		A33	RX5n
RX5p	A34		A34	RX5p
GND	A35		A35	GND
RX6n	A36		A36	RX6n
RX6p	A37		A37	RX6p
GND	A38		A38	GND
RX7n	A39		A39	RX7n
RX7p	A40		A40	RX7p
GND	A41		A41	GND
RESERVED	A42		A42	RESERVED

DATE	DESCRIPTION OF CHANGE	REV
2023-03-13	XXXXXXXX	A

TITLE	SFF-TA-1002 2C male to SFF-TA-1002 2C mother cable						SHEET	2/2
CUSTOMER		CUSTOMER P/N		PC15-EDSFF2CMF-0.5M	DRAWING	heqiang		
DWG NO.	WIPT20230313006	UNIT	SCALE	REV	VIEW	CHECKED	liupeng	
SC P/N		mm	NONE	A		APPROVAL		